

ARCOLA UNITED METHODIST CHURCH
24757 Evergreen Mills Road
Dulles, VA 20166
(703) 661-5660
www.ArcolaChurch.org

Design donated by Ami Low • Design • Illustration • Paintings
member of Arcola Church

Rooted in the past,  Sowing the future

ARCOLA UNITED METHODIST CHURCH

Therefore, since we are surrounded by so great a cloud of witnesses, let us also lay aside every weight and the sin that clings so closely, and let us run with perseverance the race that is set before us, looking to Jesus the pioneer and perfecter of our faith, who for the sake of the joy that was set before him endured the cross, disregarding its shame, and has taken his seat at the right hand of the throne of God.

Hebrews 12: 1 & 2

Campaign Prayer

Gracious God, we thank you for those who came before us: women and men, children and grandparents, who sought Your will and built Your church in Arcola. We are surrounded by a great cloud of witnesses. We honor this heritage by the lives we lead and the future we help to build. We know this future includes an expansion of our building to allow for growth of the ministry You have entrusted to us.

We pray for a room where songs of praise are learned and sung; for classrooms where Your good news is taught; for meeting space where the broken and hurting know Your healing; where strangers know community and where disciples are made and nourished.

May we bless the generations to come in the same way this great cloud of witnesses has blessed us. In the name of the Father, and the Son and the Holy Spirit. **Amen**



Pastor letter

Dear Arcola Family,

Nearly 156 years ago, a handful of committed women and men built a church in Gum Springs, Virginia. Over the next 152 years, this simple structure housed many worship services where songs of praise were sung. It was the setting for many weddings where vows of love were exchanged as well as funerals where loved ones said goodbye. It hosted baptisms where grace was poured out and communion meals where bread and cup were received in remembrance of the Lord who died and rose.

This simple white structure—now called The Chapel—stands as a constant reminder of those who came before us: women and men, children and grandparents. They were folks who sacrificed and loved, who worked and prayed, who sang and served, who created the firm foundation upon which we stand today. We have known grace upon grace.

Rooted in this past, it is our turn to sow the future. Over the past year, the Church Council has sought God’s will regarding the future of the ministries of Arcola Church in light of our continued growth. This discernment process has convinced us of the need for expanded fellowship space, more classrooms and meeting areas, and space to allow our music and drama ministry to continue to thrive. We see this expansion as Phase 2 of a master plan that allows us to continue fulfilling our purpose of making disciples of Jesus Christ.

In response to this need, I ask each of you to prayerfully consider what God can do with your financial commitment to this capital campaign. All pledges will go to servicing our current debt as well as the additional debt for the new construction. In addition, 1% of our total pledges will be dedicated to “All Things New,” which is a commitment by the Virginia Conference to start 250 new faith communities throughout Virginia over the next 30 years. In the past, Arcola Church has received nearly \$200,000 from the Virginia Conference and other churches that has enabled us to grow and reach out to the community. Our participation in “All Things New” will simply pass the grace along.

I ask for your support of this campaign not lightly, but with the knowledge that pledges will mean sacrifice. However, your pledges also will mean a future where ministry will continue to thrive and disciples will continue to be nourished. Our heritage was constructed by members who were not afraid to make such sacrifices, and abundant harvests were the results. I look forward to joining with you in making our own pledges and sowing a new future.

Grace and peace,

Pastor Chris



Pastor Chris Riedel

Campaign co-chairs letter

Dear Arcola Family,

Four short years ago, our church was blessed with the opening of our new Worship Center. This additional worship and classroom space relieved severe overcrowding during Sunday services and enabled a host of new ministries to take root at Arcola UMC. Since that time, our church has continued to be blessed with exponential growth in our congregation. This growth has afforded a multitude of new opportunities for friendship, service to the community and to others, and mission. However, it also has presented challenges — challenges we are eager to meet through this new capital campaign.

We are delighted and excited to lead this capital campaign. Through recent focus group meetings and information sessions in which the Phase 2 plans for expansion were shared and discussed, it was evident that you share our excitement.

The theme of this campaign, “Rooted in the Past, Sowing the Future” sums up not only what we aim to accomplish through the campaign, but epitomizes what we do on a daily basis at Arcola Church: remembering those who came before us and the sacrifices they made to keep this church going, while always looking forward to helping others in need and continuing to spread Jesus’ teachings. We share the strong belief that what sets Arcola apart from other churches is that we have embraced our growth while retaining our small, farming community sense, where ‘our neighbor as our family’ remains the cornerstone of our foundation. Yet, in order to continue with our ministries to our neighbors both within and outside of our congregation, our facilities must expand. With this expansion we will remain committed to ‘growing smaller as we grow larger.’

We ask for your financial support of this campaign with the understanding that it will mean dedication and sacrifice. As the wife of a dairy farmer and the son of a Methodist minister, our backgrounds are those bred of limited financial resources. We and our families have known many times of personal sacrifice. Sacrifices necessary to keep the farm in operation, to put food on the table, and to keep our churches moving forward. However, these sacrifices were always worthwhile and never once did we regret them. As with Arcola’s prior capital campaigns, we ask not for equal gifts, but for equal sacrifice.

Please join us in making a gift to this campaign that is both joyful and sacrificial to show our deep commitment to continuing to spread His word through Arcola Church.

With blessings,

Ruth Dowden and Dave Balcom



*Campaign co-chairs
Ruth Dowden & Dave Balcom*





History

ARCOLA UNITED METHODIST CHURCH

1853 — The Lewis Family donates the “Schoolhouse lot” to the Methodist Episcopal Church. A building is erected (our current “Chapel”) and worship services begin for Gum Springs Methodist Episcopal Church, South.

1861 — The Community gathers in the Chapel and votes 135 to 5 to affirm Virginia seceding from the Union. The church serves as a gathering place during the war.

1888 — The church does what it does best: it gathers to eat.

1894 — Members of the church help form the Pleasant Valley United Methodist Church located on Route 50. We become part of an “8 point” charge, with one preacher serving 8 churches, including Sterling, Ryan (now Crossroads in Ashburn and Floris).

Early 1900s — The Gum Springs Village and Church names are changed by the Post Office to “Arcola” to avoid confusion with Gum Springs in Louisa County, Virginia.

1939 — The Methodist Church reunites with itself and we become known as Arcola Methodist Church.

1950s and 1960s — Arcola UMC continues playing a vital role in the community by helping to form the Volunteer Fire Department and Arcola Lions Club. The church is thriving and builds the parsonage (now called the “Cross Building”) and the Fellowship Hall is added on to the sanctuary (part of the current “Chapel”).



1980s — Arcola Church struggles with declining attendance and tight budgets. A small group of dedicated congregants manage to keep the doors open through countless bake sales, dinners for the Lions Club, and sacrificial giving.

1995 — Arcola Church is blessed with a good looking (and modest) Dallas Cowboy-loving preacher and commits to reach out to the growing community. Arcola receives nearly \$200,000 in support from Methodists across Virginia. Additionally, the Hazout Group, our next-door neighbor, donates four acres of land to the church in exchange for one of Betty Jones’s coconut cakes (experts agree Hazout got the better deal).

2004 — The addition of a full-time pastor and the exponential growth in southeastern Loudoun County have helped to swell the number of congregants at Arcola Church. Literally “busting at the seams” we break ground on 9,000 square feet of new space to accommodate our growing congregation.

2005 — On Mother’s Day the congregation consecrates the new “Worship Center” which contains expanded worship space, a complete kitchen, five classrooms for Sunday school and a new Arcola Christian Preschool (which opens in the fall 2005), a Prayer Room, and an outdoor fountain, tower and garden.



Why Phase Two?



Arcola United Methodist Church has the need to proceed with the next phase of the building project.

Planning of Phase Two

- In 2006, Arcola UMC undertook our second capital campaign. The stated purpose of that campaign was to not only provide debt service for the existing debt on the Worship Center, but also to provide “seed money” for planning of Phase Two.
- Over the last eighteen months, the Church Council and Pastor Chris Riedel have prayerfully considered the short-term and long-term needs of our church in light of our church purpose of “making disciples for Jesus Christ.” They determined that the space constraints listed below are hindering or will soon hinder our ability to continue fulfilling our church purpose.

Space Constraints

- Sunday worship averages 86 at the 9:00 am service and 182 at the 10:30 am service. The 182 at 10:30 am is over 80% of capacity, a common benchmark that suggests the need for expansion.
- In recent years our Music and Drama programs have flourished to now include the FLN Choir, Arcola Youth Choir (AYC), No Name Band, Bandette, Chime Choir, Children’s Musicals, Youth and Adult Musicals, and more. However, the Great Room does not provide sufficient rehearsal and practice space for all groups.
- All Sunday School rooms are currently used during 10:30 am worship.
- Our Nursery and Preschool aged programs are the fastest growing age groups which will necessitate additional Sunday School classroom space to accommodate these children as they grow.
- Arcola Christian Preschool reached capacity enrollment in 2008-2009 with no additional classroom space to grow into.

Why continue to grow?

- The purpose of Arcola Church is to make disciples of Jesus Christ. We do this by reaching out and welcoming in all people, the way we were welcomed by those who came before us. More than numbers, this reflects the purpose of the church: namely to serve the world.
- Our tradition as United Methodists – from John Wesley who proclaimed “The World is my Parish,” to Mrs. Marshall, Betty Jones, Les Pangle, John Pearson and countless others – is to welcome, love, and serve. Buildings are tools to accomplish this purpose and honor this tradition.

Why not a sanctuary now?

- In evaluating needs and opportunities, the Church Council has determined that our most urgent need is for additional education, fellowship, and music space. The crowding at our 10:30 am service will be temporarily addressed by changing worship service times beginning this fall to 9:30 am and 11:00 am, with the likelihood of adding a third worship service in 2010 or 2011. However, a sanctuary is planned as Phase 3 of our expansion which we will begin planning for through our next capital campaign in 2012.

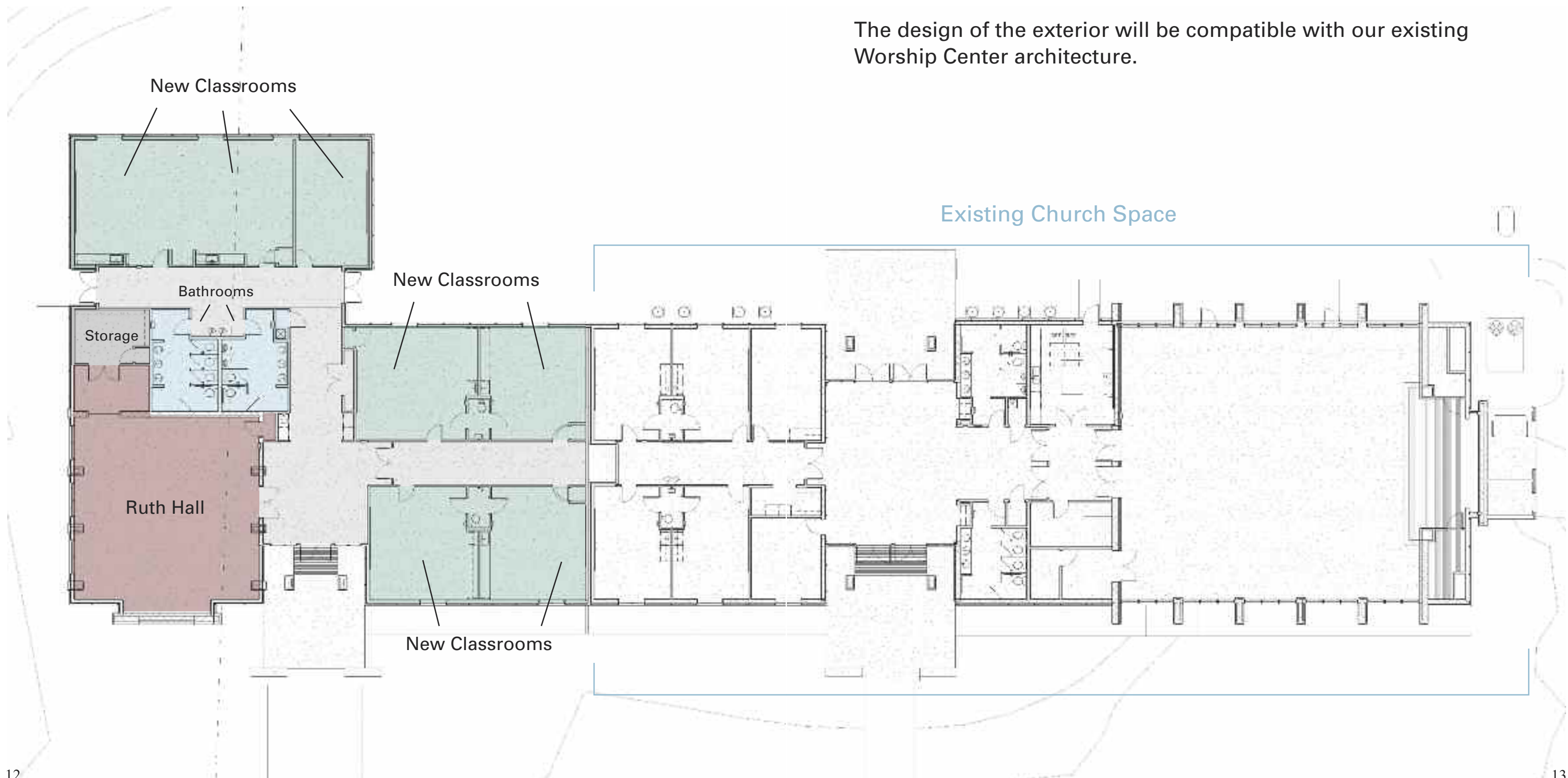
What We're Planning



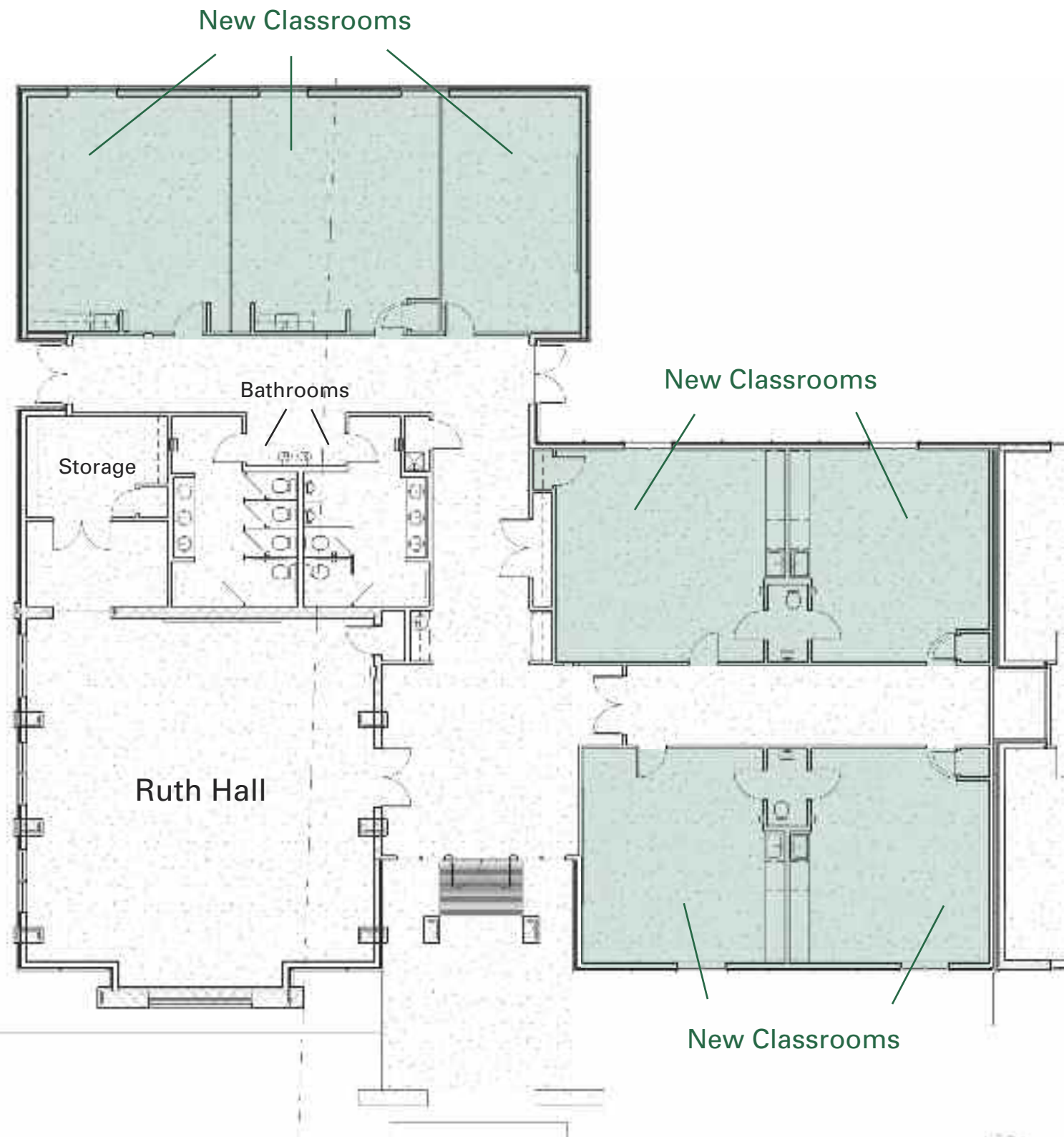
What We're Planning

The expansion will add over 7,000 square feet of additional space for classrooms, meeting areas, gatherings, and preschool.

The design of the exterior will be compatible with our existing Worship Center architecture.



Classrooms and Multipurpose Space



Five new classrooms are envisioned for first grade through fifth grade Sunday School, varying in size between 400 and over 700 square feet, with two adjacent classrooms separated by a moveable room divider providing capability to create one large room of over 1,000 square feet to accommodate larger gatherings.

Combined with existing classrooms, this allows for all preschool through 5th grade Sunday School classes to be held in the Worship Center, eliminating the need for traffic of elementary aged children between buildings on Sunday mornings.

This plan allows for classrooms in the Cross Building to be used for Adult Sunday School; while enabling use of the Chapel for our older youth.

The additional classrooms also provide for the future growth of Arcola Christian Preschool.



View of inside new classroom

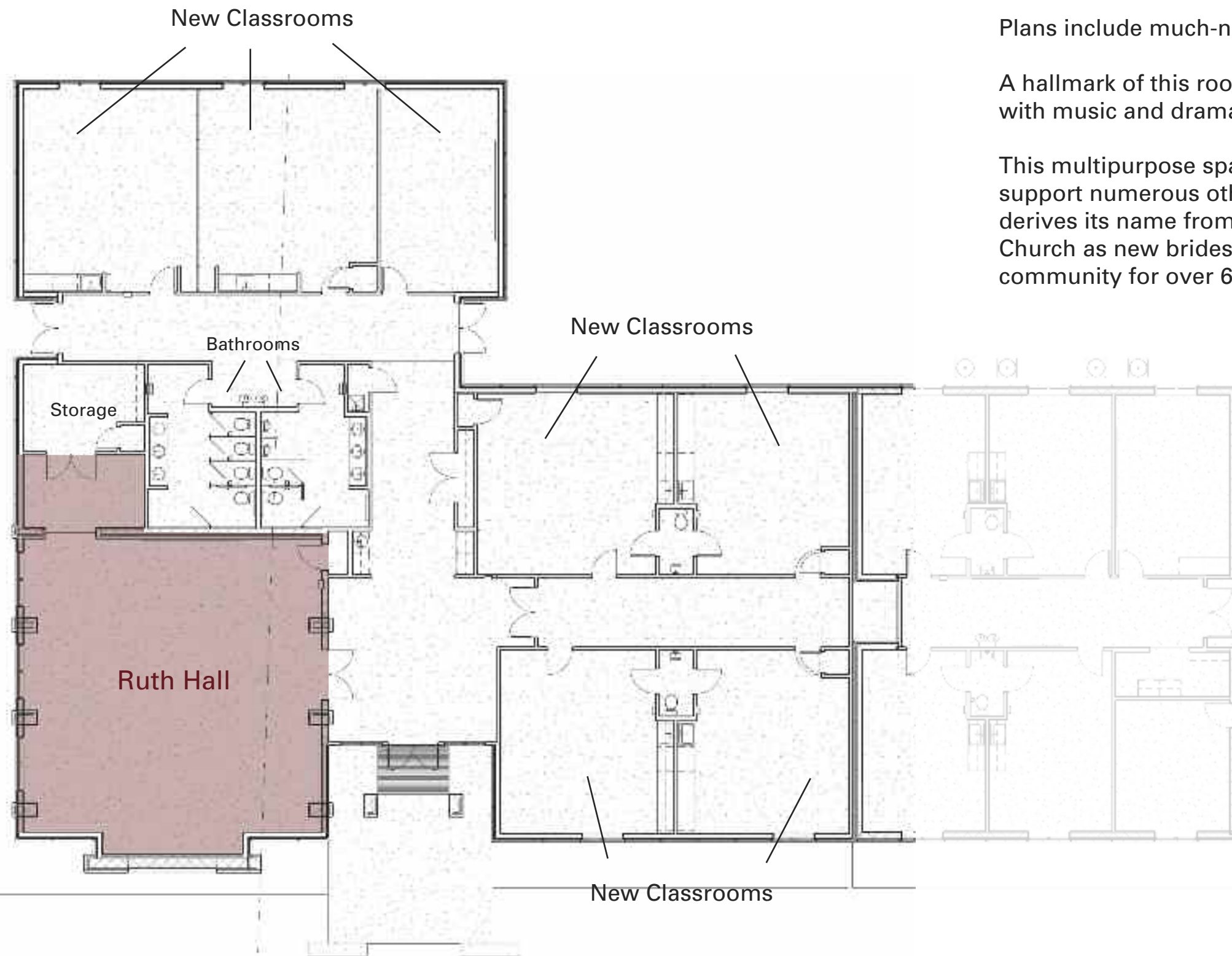
Ruth Hall

This space of over 1,500 square feet is being designed to accommodate choir, band and drama rehearsals, as well as gatherings such as the Stations of the Cross, youth lock-ins, new member meetings and community gatherings.

Plans include much-needed office space for the music team and storage space.

A hallmark of this room will be audio/visual technology to allow for and assist with music and drama rehearsals, as well as other gatherings.

This multipurpose space will allow our music ministry to flourish as well as support numerous other ministries in the church and community. The room derives its name from Ruth Biggers and Ruth Dowden who came to Arcola Church as new brides in the 1940's and have served faithfully the church and community for over 60 years. Such a cloud of witnesses...



View of inside Ruth Hall

Key Milestones

Phase Two	
Feasibility meetings with congregation	4/14/09-5/06/09
Charge Conference to approve proceeding with construction	June 2009
Complete designs & submit to county	Summer 2009
Capital Campaign Advance Giving Phase	7/31/09-8/30/09
Capital Campaign Kickoff Worship Service & picnic	9/13/09
Construction begins	Fall 2009
Capital Campaign ends & First Fruits Sunday	11/08/09
Occupy new space	Spring/Summer 2010

CAPITAL CAMPAIGN REACTIONS BY ARCOLA MEMBERS

“To encourage continued growth which in turn leads to providing more areas for ministry within the community.”

– Donna Jackson

“Strengthen the church to meet the needs of existing members and to offer service to new members.”

– Bob Lynd

“Providing for growth and outreach to the growing community.”

– Karen Byrd

“Providing truly broad based opportunity for Christian worship and education.”

– Dick Schmitz

“To be able to accommodate more people and more programming towards our purpose.”

– Heather Gaulding

“Meeting the needs of a growing congregation.”

– Suzie Sterrett

“Let’s do this!”

– Ron Bowman

Cost of Building

Square Footage	7,050 <i>Over 7,000 square feet of new space</i>
Hard Cost	\$1,128,000 <i>(assumes \$160 per square foot)</i>
Soft Cost (20%)	\$280,000
Contingency	<u>\$76,560</u>
Total Cost	\$1,484,560
Current Debt	\$2,377,279
New Debt Total *	\$3,861,839 <i>(includes current debt & new debt)</i>
Current Monthly Debt Payment	\$15,337
Estimated New Monthly Debt Payment	\$23,777

*Although building costs above are estimated and may be subject to change, our total debt (current debt plus new debt) will not exceed \$4,000,000.



The Unique Opportunity of a Capital Campaign



A Capital Campaign has certain features distinguishing it from annual giving:

- It is in response to a matter of **SIGNIFICANT** need, and therefore takes place **ONLY** when necessary.
- It seeks much **LARGER AMOUNTS** of money than a planned budget can meet.
- It schedules payments over a **LONGER PERIOD** of time; donors select a giving plan convenient for them.
- It requires a **PLANNED** and **INSPIRATIONAL** effort, often involving gifts of annuities, real estate, trusts, life insurance, IRAs, securities or other assets. Through it, many individuals come to realize the joy of deepening their faith and commitment to the church.

GIVING POTENTIAL*

3 Year Total	Weekly	Monthly	Yearly
\$5,000	32	139	1,667
\$10,000	64	278	3,333
\$15,000	96	417	5,000
\$20,000	128	556	6,667
\$25,000	160	695	8,333
\$30,000	192	833	10,000
\$35,000	224	972	11,667
\$40,000	256	1,111	13,333
\$45,000	288	1,250	15,000
\$50,000	321	1,389	16,667
\$100,000	641	2,778	33,333
\$150,000	962	4,167	50,000
\$200,000	1,282	5,556	66,667
\$500,000	3,205	13,889	166,667

**Dollar amounts have been rounded*



Four Ways to Give

I. Give a Cash Gift

Ask God for creative ways to increase your gift. You might consider giving from savings, tax refunds, or garage sales. Also consider reducing expenses or deferring a major purchase as a sacrifice to God. Involve your whole family in raising a specific amount.

II. Make a 36-Month Giving Pledge*

The Bible teaches that spiritual maturity includes developing the habit of weekly giving. Giving the first portion of our income on the first day of each week (Sunday) shows that God really has first place in our lives. Also, you can give far more than you thought possible when it's spread out over time. See the Giving Potential chart on the previous page.

III. Gifts of Stocks, Securities, or Real Estate to Arcola United Methodist Church

Gifts of stocks, securities, and real estate are welcomed in our mission of "Making Disciples of Jesus Christ which we do through praising the Lord, learning about His teachings, and sharing His love in service to others."

Stocks/Securities

With a gift of appreciated securities, you may realize three favorable tax outcomes:

- a. A charitable income tax deduction for the fair market value of the property.
- b. Avoidance of capital gains taxes on the transfer.
- c. Removal of this asset from your estate for estate tax purposes.

Real Estate

Qualified real estate may be deeded outright to Arcola United Methodist Church, or if it is a residence or farm, may be given with a retained life interest. The value of the gift may be deductible as a charitable contribution.

Instructions

You should contact your tax advisor for specific advice on how this type of contribution can benefit your specific situation. If you choose to make a donation of securities or real estate, please notify Chris Slupe, Church Administrator, at 703-661-5660 ext. 101 to ensure proper transaction processing.

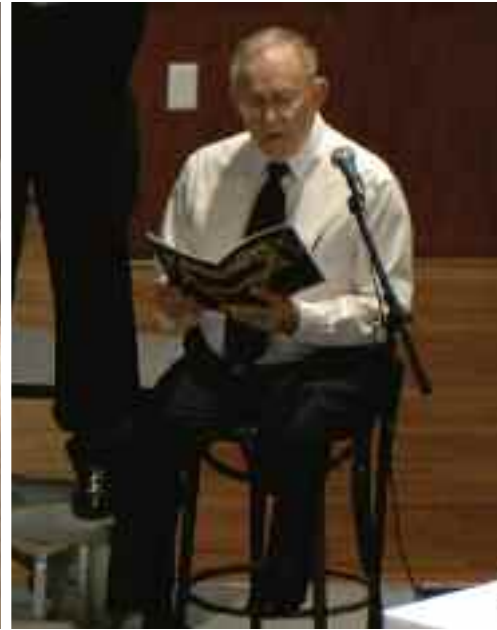
IV. Make Arcola Church a Beneficiary in Your Will

There are many ways that you can include your church in your estate and leave an inheritance for your heirs at the same time.

* We ask that each 3 year pledge be 'above and beyond' regular weekly offerings.

Staff & Leadership

ARCOLA UNITED METHODIST CHURCH



Pastoral Staff & Lay Leadership

Chris Riedel, Pastor

Phil Mowrey, Lay Leader

Rick Dawson, Lay Speaker

Connie Theroux, Church Council Chair

Building Committee

Dan Dschuhan

Geoff Gay

Don Gillis

Joe Harris

Steve Moriak

Dick Schmitz

Eric Siegel

Ray Weekley

Capital Campaign Steering Committee

Ruth Dowden, Co-Chair

Dave Balcom, Co-Chair

Steve Annino

Angel Campbell

Phil Mowrey

Connie Theroux